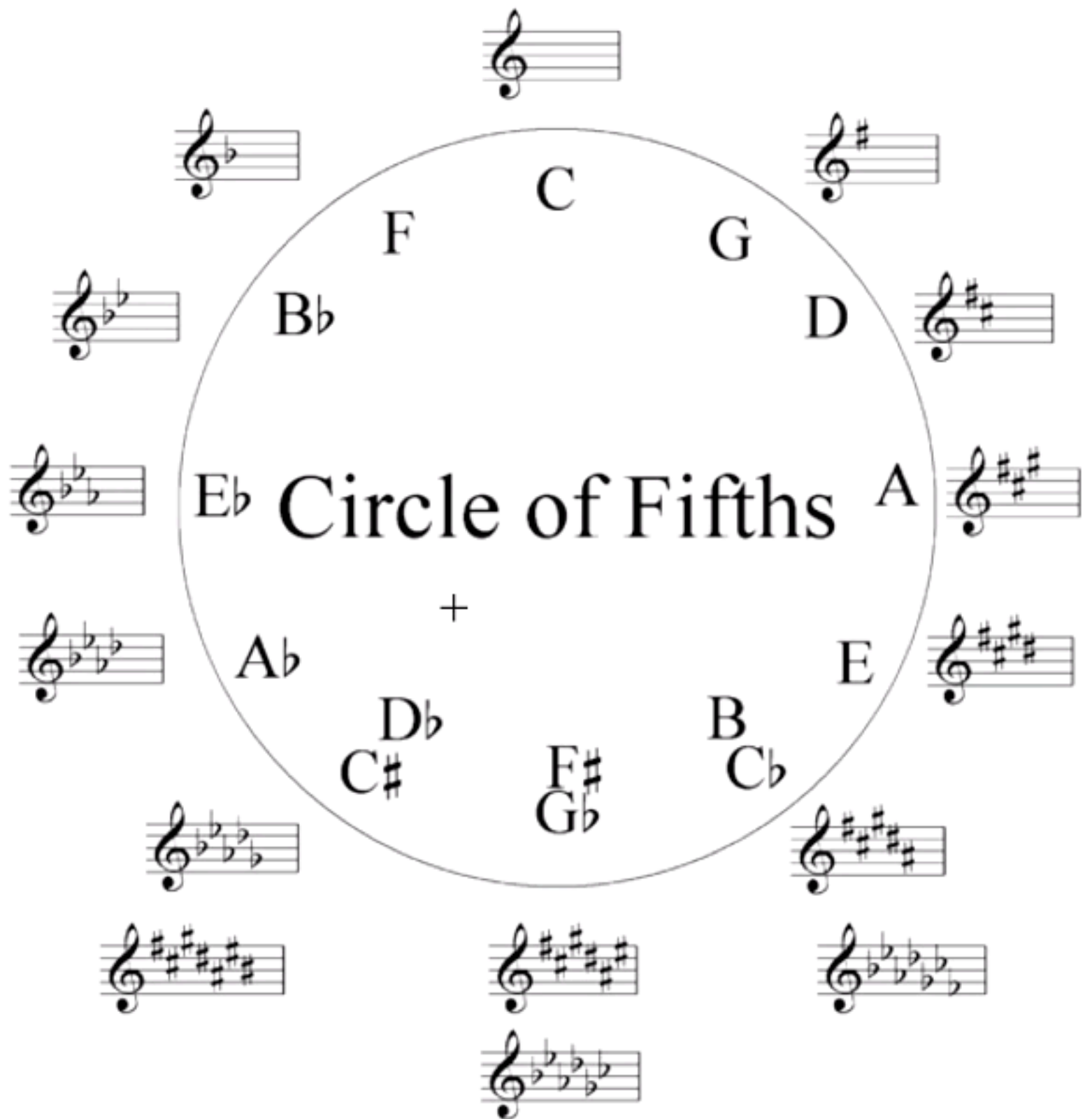


Key Signatures



MAJOR DIATONIC SCALES / TRIADS / TRIAD-CHORD NUMBERING SYSTEM

C MAJOR SCALE **D MAJOR SCALE**

1 2M 3M 4 5 6M 7DIM (OCTAVE) 1 2M 3M 4 5 6M 7DIM (OCTAVE)

E MAJOR SCALE **F MAJOR SCALE**

1 2M 3M 4 5 6M 7DIM (OCTAVE) 1 2M 3M 4 5 6M 7DIM (OCTAVE)

G MAJOR SCALE **A MAJOR SCALE**

1 2M 3M 4 5 6M 7DIM (OCTAVE) 1 2M 3M 4 5 6M 7DIM (OCTAVE)

B MAJOR SCALE **D FLAT MAJOR SCALE**

1 2M 3M 4 5 6M 7DIM (OCTAVE) 1 2M 3M 4 5 6M 7DIM (OCTAVE)

E FLAT
MAJOR SCALE

G FLAT
MAJOR SCALE

Handwritten musical notation for two major scales. The first system shows the E Flat Major scale (E-flat, F, G, A-flat, B-flat, C, D, E-flat) and the G Flat Major scale (G-flat, A-flat, B-flat, C, D-flat, E-flat, F, G-flat). Each scale is written on a treble clef staff with a key signature of three flats. Below each scale, the corresponding chords are written in a simplified notation: Eb, Fm, Gm, Ab, Bb, Cm, Ddim, Eb for E Flat Major; and Gb, Abm, Bbm, Cb, Db, Ebm, Fdim, Gb for G Flat Major. Below the chords, fingerings are indicated: 1, 2M, 3M, 4 for the first four notes, and 5, 6M, 7DIM (OCTAVE) for the last three notes. The notation includes a treble clef, a key signature of three flats, and a brace on the left side.

A FLAT
MAJOR SCALE

B FLAT
MAJOR SCALE

Handwritten musical notation for two major scales. The second system shows the A Flat Major scale (A-flat, B-flat, C, D-flat, E-flat, F, G, A-flat) and the B Flat Major scale (B-flat, C, D, E-flat, F, G, A, B-flat). Each scale is written on a treble clef staff with a key signature of three flats. Below each scale, the corresponding chords are written in a simplified notation: Ab, Bbm, Cm, Db, Eb, Fm, Gdim, Ab for A Flat Major; and Bb, Cm, Dm, Eb, F, Gm, Adim, Bb for B Flat Major. Below the chords, fingerings are indicated: 1, 2M, 3M, 4 for the first four notes, and 5, 6M, 7DIM (OCTAVE) for the last three notes. The notation includes a treble clef, a key signature of three flats, and a brace on the left side.

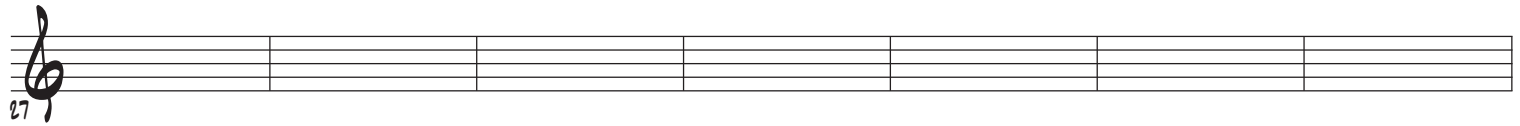
"RHYTHM CHARTS"

MODULE 07

"WAITING HERE FOR YOU" / "IN THE RIVER" / "RUN TO THE FATHER" / "IN CHRIST ALONE"

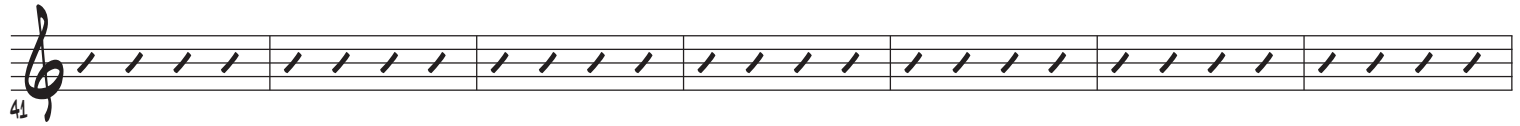
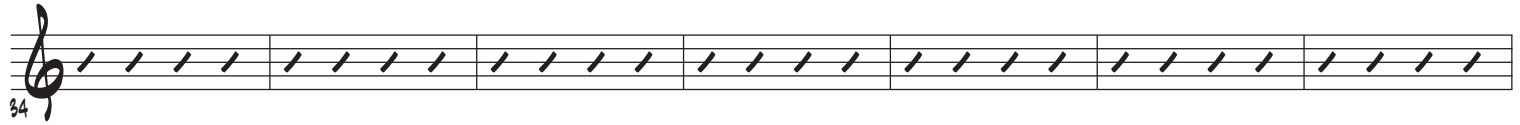
KEY =


"WAITING HERE FOR YOU"



"IN THE RIVER" (INTRO & VERSE)

KEY =




48 

"IN THE RIVER" (CHORUS)

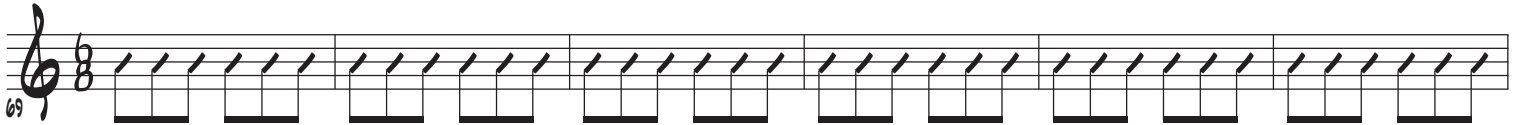
55 

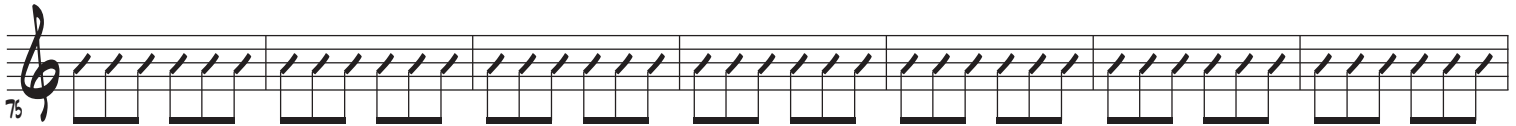
END...

62 

"RUN TO THE FATHER"

KEY =

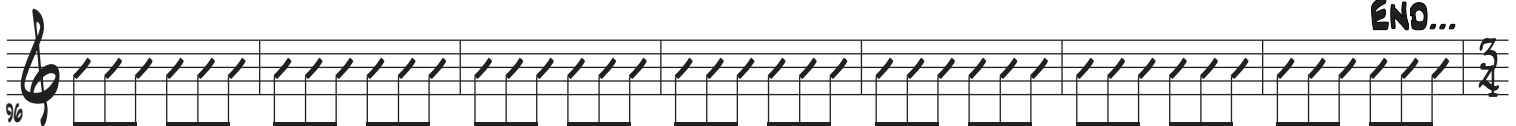
69 

75 

82 

89 

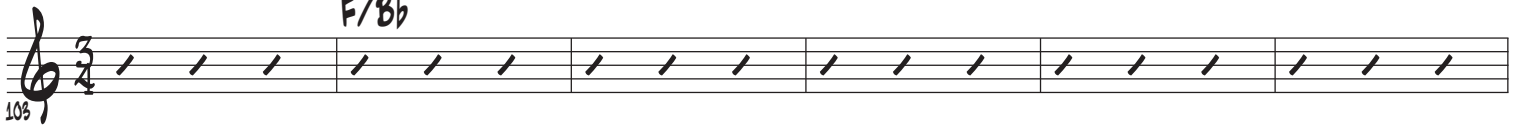
END...

96 

"IN CHRIST ALONE"

KEY =

F/Bb

103 

RHYTHM CHARTS - Pg 3

109

A musical staff in treble clef containing seven measures of rhythmic notation. Each measure contains three slanted lines, representing eighth notes.

116

A musical staff in treble clef containing seven measures of rhythmic notation. Each measure contains three slanted lines, representing eighth notes.

123

A musical staff in treble clef containing six measures of rhythmic notation. The first three measures each contain three slanted lines. The fourth measure contains two slanted lines and a time signature change to 2/4. The fifth measure contains three slanted lines and a time signature change to 3/4. The sixth measure contains three slanted lines.

129

A musical staff in treble clef containing six measures of rhythmic notation. Each measure contains three slanted lines. The staff ends with a double bar line and the text "END..." written above it.

"RHYTHM CHARTS"

MODULE 07

"WAITING HERE FOR YOU" / "IN THE RIVER" / "RUN TO THE FATHER" / "IN CHRIST ALONE"

KEY = E FLAT

CHORUS

"WAITING HERE FOR YOU"

1

Chords: Eb 1, Fm 2M, Cm 6M, Bb 5, Ab 4, Eb 1, Fm 2M

BRIDGE

7

Chords: Cm, Bb, Cm, Bb, Ab, Ab 4, Cm 6M, Bb 5, Ab 4

14

Chords: Cm, Bb, Ab, Cm, Bb, Ab, Cm, Bb, Ab, Cm, Bb

21

Chords: Ab, Cm, Bb, Eb, ENO...

27

"IN THE RIVER" (INTRO & VERSE)

KEY = F

34

Chords: Bb 4, Gm 2M, Dm 6M, F/A 1/3, Bb 4, Gm 2M, Dm 6M

VERSE

41

Chords: F/A, Bb 4, Gm 2M, Dm 6M, F/A 1/3, Bb 4, Gm 2M

48

D_M F/A B_b

"IN THE RIVER" (CHORUS)

4 B_b 2_M G_M G_M D_M 1/3 F/A B_b G_M D_M

55

62

F/A B_b END...

"RUN TO THE FATHER"

KEY = B FLAT 1

69 B_b 2_M C_M G_M 4 E_b 1 B_b C_M

75

BRIDGE

G_M E_b G_M 4 E_b 1/3 B_b/D 5 F G_M

82

BRIDGE

E_b B_b/D F G_M E_b B_b/D F

89

CHORUS

G_M E_b B_b/D F B_b 2_M C_M G_M

96

E_b B_b C_M G_M E_b B_b END...

"IN CHRIST ALONE"

KEY = F 1

103 F 1/4 F/B_b G_M D_M 4 B_b 1 F 1/4 F/B_b

VERSE

RHYTHM CHARTS - Pg. 3

109

Dm Bb F Dm C F/A Bb C F Bb F Dm

116

C F/A Bb C F F/A Bb Dm C F/A Bb Dm C Bb

123

F Dm C F/A Bb C F F F/Bb Dm

130

Bb F F/Bb Dm Bb ENO...